

A glowing blue pyramid is the central focus, set on a circular stage. The background is a dark space with a large, textured sphere at the top and a starry field. A person's silhouette is visible in the foreground, looking up at the pyramid.

# PRESTIGE XL2 & L2

## PRODUCT OVERVIEW



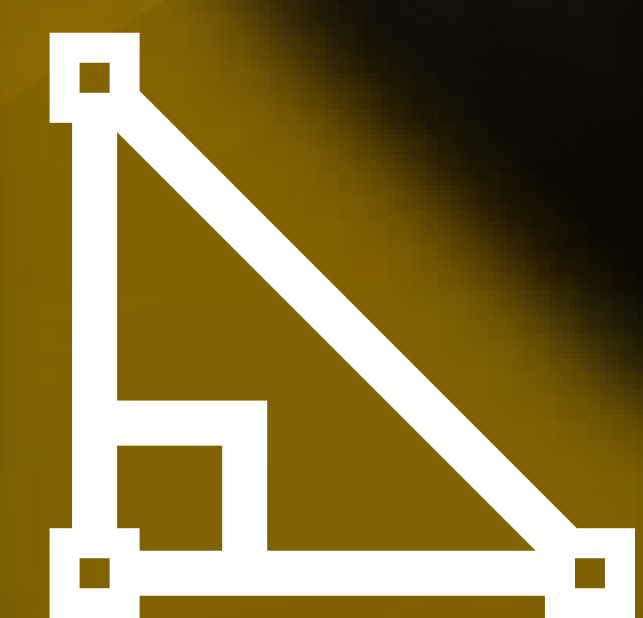
# PRODUCT VALUE PROPOSITION



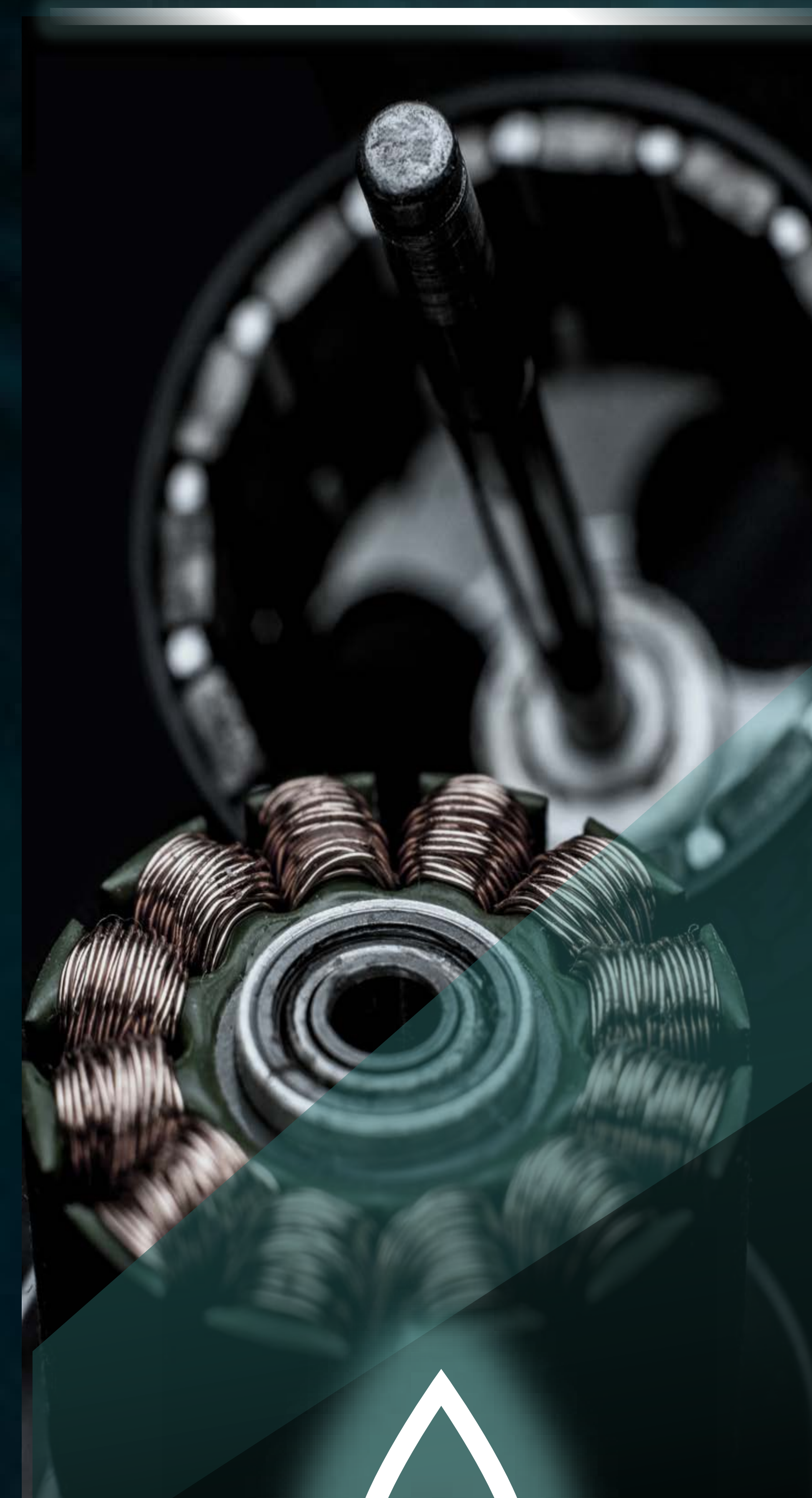
# ▶ PRODUCT VALUE PROPOSITION



**PRINT SPEED**



**WEIGHT &  
DIMENSIONS**



**SMART INK STIRRING  
& CIRCULATION**



**FEED REEL &  
MEDIA  
TENSIONER**



# PRINT SPEED

## FASTEST WITHIN ITS CLASS

even compared to 3 heads / 4 heads in the current market

- **XL2:** Dual i3200 4 Color + 4 White / **Print speed:** 102.3 sq ft/hour (720x1800)
- **L2:** Dual i3200 4 Color + 3 White / **Print speed:** 40-60 sq ft/hour (720x1800)

PRINTER	# OF PRINT HEAD	ROLL CAPACITY	RESOLUTION	SQ FT/H
Prestige XL2	2	24"	720x1800 / 12x12	130+ sq ft/hour
Prestige L2	2	16"	720x1800 / 12x12	40-60 sq ft/hour
Prestige A3+R	1	13"	720x1800 / 12x12	13 sq ft/hour
STS VJ628D	1	24"	360x1080 / 12x12	36 sq ft/hour
Imported 24" DTF Printer	4	24"	720x1800 / 12x12	120 sq ft/hour

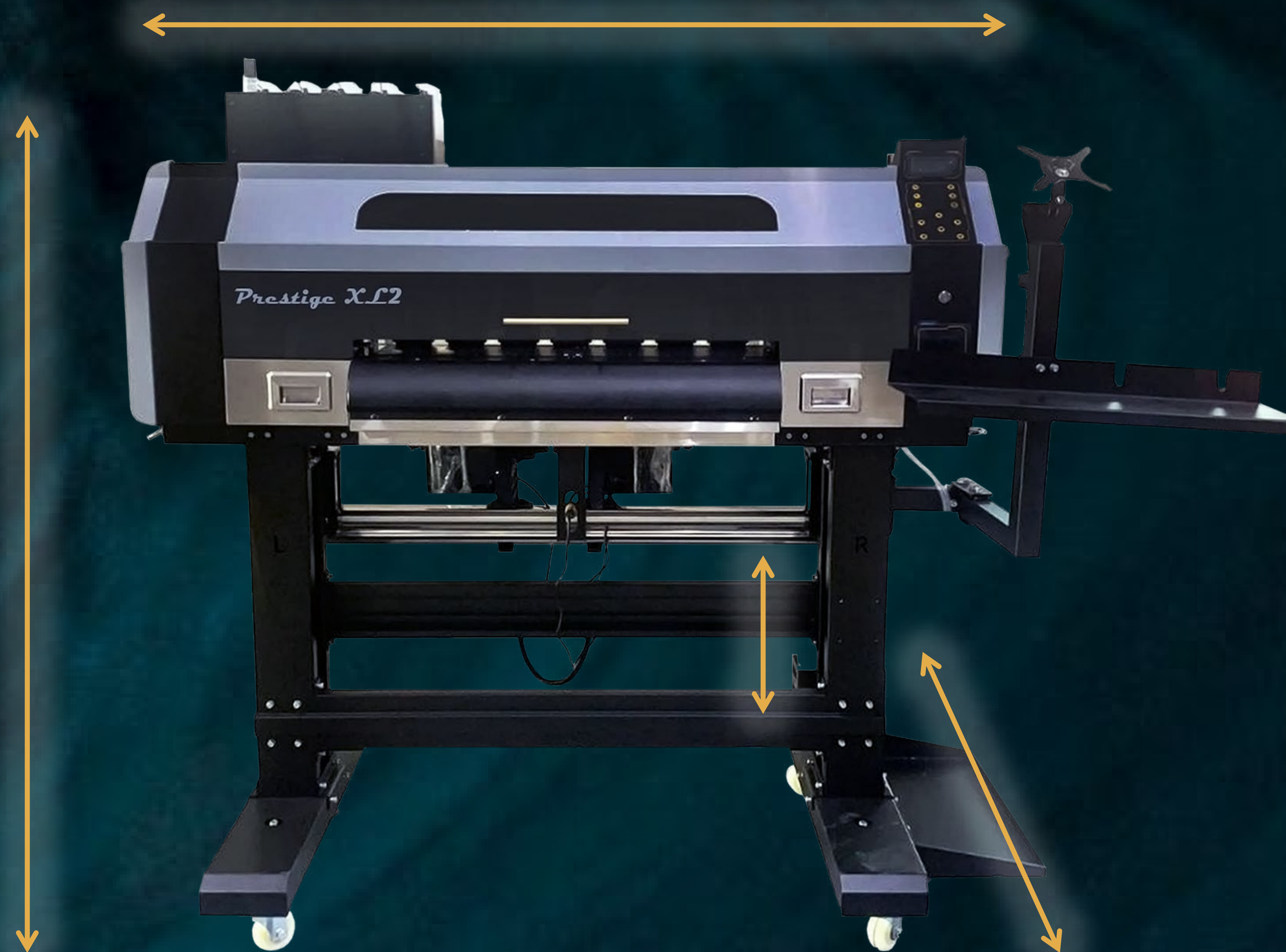
\*Results can vary based on graphic resolution & size

- **X Axis Motor and Printhead Carriage Guide Rail:** perfectly leveled / High Precision Guide allows Printhead Carriage to move back and forth faster than any printer in the market



# XL2 WEIGHT & DIMENSIONS

**EASY** to set up & **SMALLER** footprint  
compared to other 24 inch DTF Printers in the market



- **Compact Design:**  
29.5L x 66W x 55.1H in.  
(750 x 1677 x 1400 mm)
- **Weight:** 330.69 lbs (150 kg)



# L2 WEIGHT & DIMENSIONS

**SAVE** on space & cost with the perfect  
**MID-SIZED BUSINESS PRINTER**



- **Compact Design:**  
30.75L x 58W x 56.25H in.  
(781 x 1473 x 1429 mm)
- **Weight:** 306.5 lbs (139 kg)



# SMART INK STIRRING & CIRCULATION



- **1 liter bulk ink bottle with ink Stir System, Easy Refillable System**



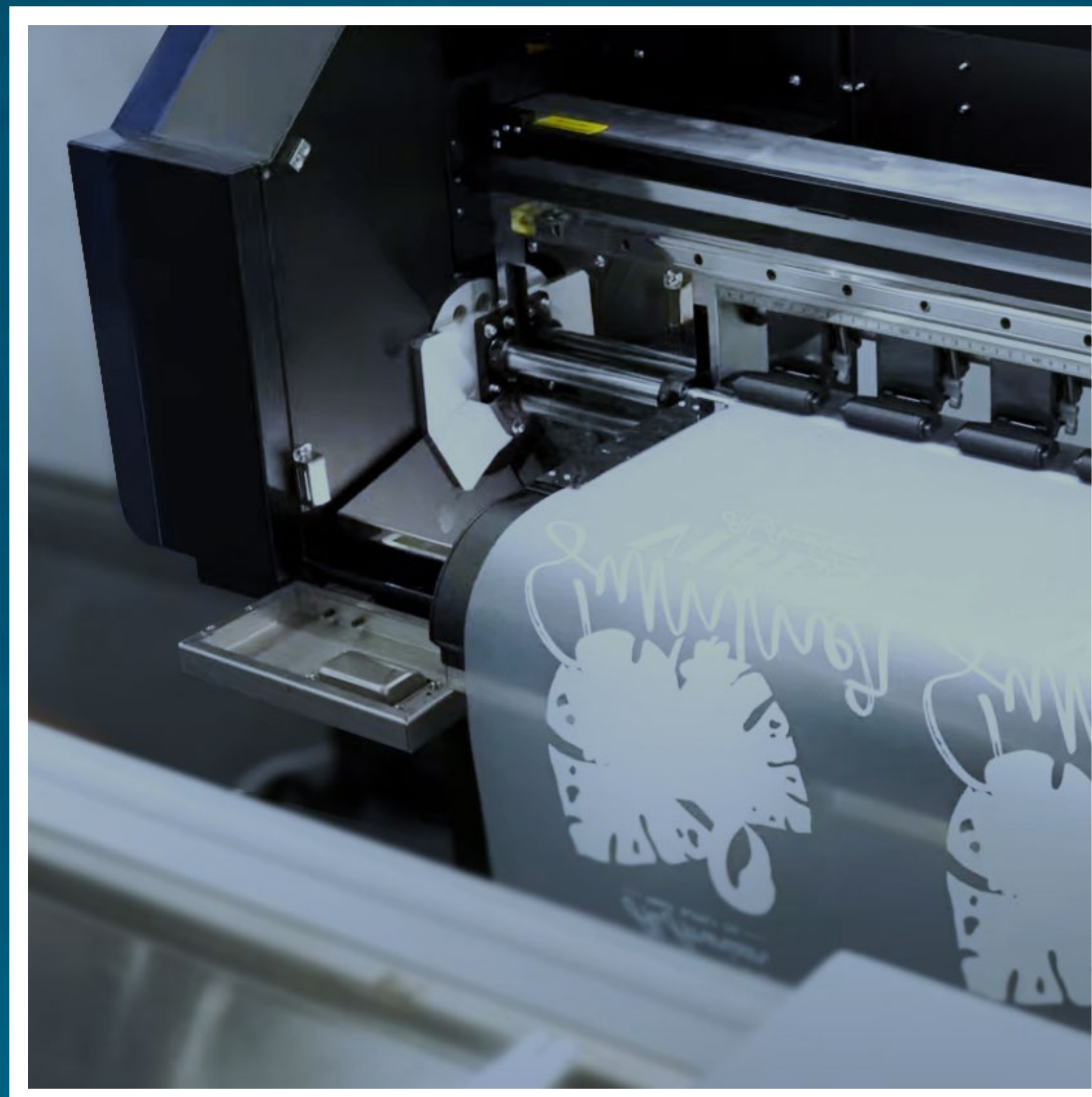
- **Inline Ink Filters for all Ink Colors to Prevent any debris / dust entering the Print system**



- **WIMS Pump- Ink recirculator to prevent White ink from separating**



# FEED REEL & MEDIA TENSIONER



- **Smart Feed Reel, Sensor to Drive substrate to the printer without slipping**



- **Sensor Detects Media, Pauses Prints When There is No Media**




# MAINTENANCE & SUPPORT PROGRAM



# ▶ MAINTENANCE & SUPPORT PROGRAM

\*L2 and XL2 requires onsite training to ensure customer satisfaction



## SOFTWARE DIGITAL FACTORY

- User friendly / Easy to Use / No Dongle Required
- Videos Available
- Scalable Automation Capacity
- Profiled and Ready to Use



## WARRANTY

- 1 year on all parts
- 6 month on printhead (Limit to 2)



## SETUP & MAINTENANCE

- Provide guided Videos for Self Install.
- Easy Access to all major parts
- Takes less than 5 min/ daily
- Long Term Maintenance is required for 2 weeks or longer idle time



# DTF STATION SOLUTION





# ▶ DTF STATION – COMPLETE SOLUTIONS



**DTF  
STATION  
SUPPORT**



**SUPPLIES**



**OTHER  
EQUIPMENT**



# DTF STATION SUPPORT



- **Self Serve Videos:** Over 40 videos on maintenance, troubleshooting, basic setup.
- **Onsite Training:** We offer onsite training at an additional cost. (Prestige XL2 and Prestige L2 must include onsite training to ensure customer satisfaction.)
- **Private Forum:** Customers can install an app to their phone and computer to communicate with us instantly. Call, Post photos, Setup Remote Sessions and more.
- **Virtual Training:** Weekly virtual training on Zoom
- **Ticket System:** Complete online ticket / Receive response within 24 hours
- **Chinese OEM Partner/ Logistic Partner:**
  - We have a long relationship with our Chinese partners to ensure we get our customer's printer up and running within 24 hours
  - **First- Aid Kit:** Offer to Dealers to fix minor/ major troubleshooting for the customers



# SUPPLIES



## DTF Ink

- Oeko Tex Certified
- Made in Korea
- Consistent
- 1 Year Shelf Life



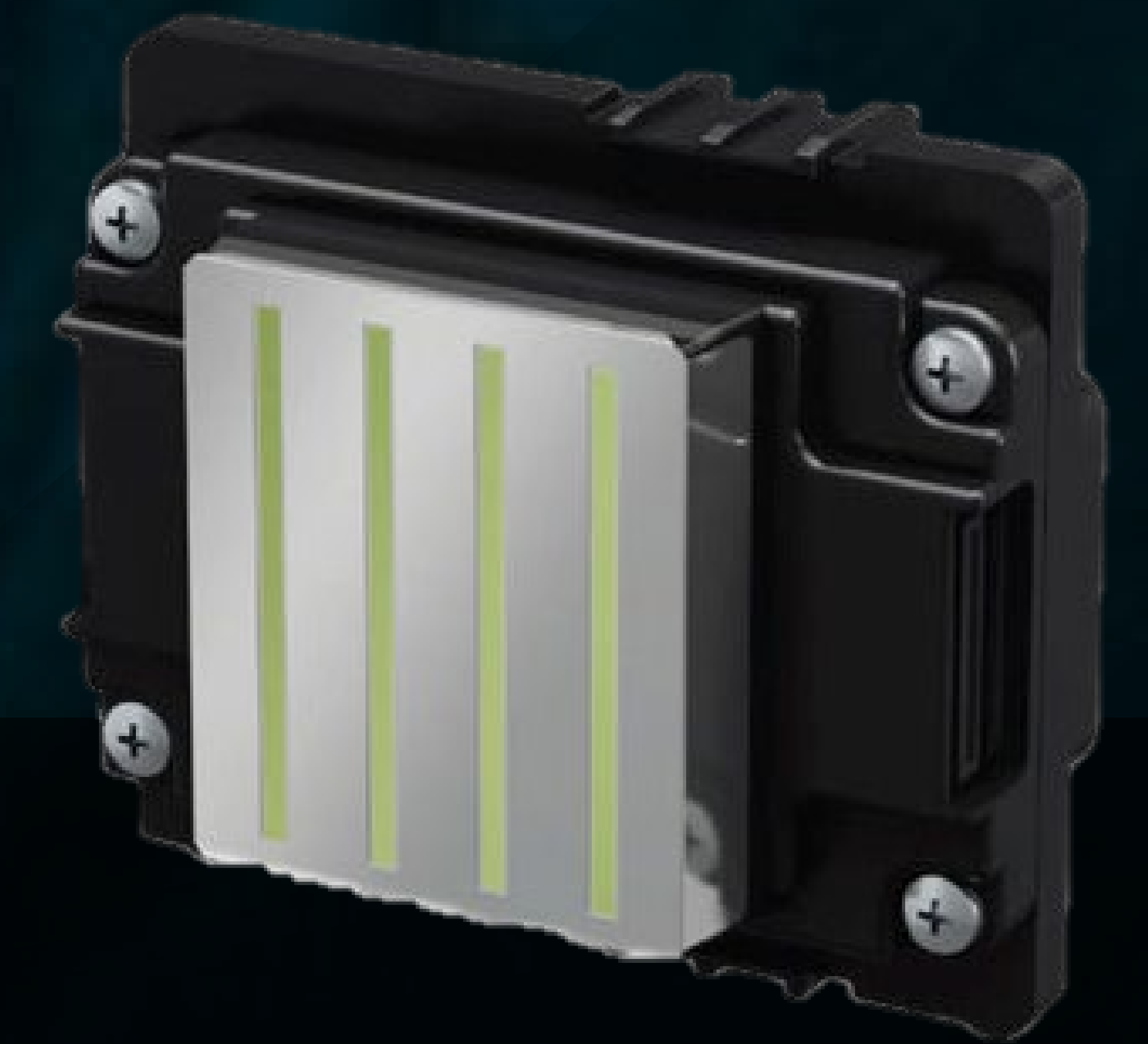
## TPU POWDER

- Oeko Tex Certified
- Made in Korea
- 80~120 gsm



## FILM (HOT&COLD)

- 85 gsm/ um
- Hot Peel: Remove film instantly
- Made in Korea/ China (Premium / Standard)
- Available in different sizes for sheets (A4, A3, 16x20, 14x16) & rolls (width A4, A3, A2, A1 / Length approximately 325ft Long)



## PRINT HEAD EPSON I3200

- Epson I3200
- High productivity & high image quality with 600dpi high-density resolution



# PRINT HEAD

---

## EPSON I3200



- Ink Type : Aqueous
- Type : PrecisionCore MicroTFP printhead
- Width x Depth x Height: 69.1 x 59.4 x 35.6 mm
- Weight : 82g
- Number of nozzle : 3200
- Nozzle pitch/nozzle row : 1/300 inch
- Nozzle rows: 8 rows
- Nozzle Resolution : 300 noi/row 600 npi/2 rows
- Max. number of color inks : 4 colors
- Effective print width : 33.8 mm (1.33 inches)
- Viscosity range : 3-4 mPa·s
- Droplet ejection performance - Binary : 6 pl at 43.2 kHz
  - 3 levels grey scale : 6.3, 12.3 pl at 21.6 kHz
  - 4 levels grey scale 3.8, 6.1, 9.4 pl at 21.6 kHz



PRODUCT VALUE PROPOSITION

**OTHER  
EQUIPMENT**



**DTF Powder Applicator/ Dryers**

**< SEISMO SERIES >**



PRODUCT VALUE PROPOSITION



**OTHER  
EQUIPMENT**



**Heat Press**

**< PROXIMA & MAXIMA  
SERIES >**



PRODUCT VALUE PROPOSITION



**OTHER  
EQUIPMENT**



**Purifiers, Ovens, & More available**

**< OTHER EQUIPMENT >**



## PRODUCT VALUE PROPOSITION

# SEISMO A13



- **Spreads and melts powder, saving time, effort, and cost**
- **Features:**
  - **Up to 13" wide media**
  - **Simple Touch Screen** - Just touch the desired option to navigate through the menus
  - **Customizable Automatic Powder Recycling:** more effective than manual recycling
  - **Infrared Drying and Heating** - improves and protects color reproduction
  - **Vacuum Absorption Conveying Platform** - secures the printing material to avoid bulging, run-offs, and media waste
- **Specifications:**
  - **Dimensions:** 42" L x 26" W x 24" H
  - **Shipping Weight:** 170 lbs. (77.1 kg)



## PRODUCT VALUE PROPOSITION

# SEISMO A16



- **Spreads and melts powder, saving time, effort, and cost**
- **Features:**
  - **Up to 16" wide media**
  - **Built-in Air Filters** - HEPA 2-layer air filters filter out any fumes from DTF powdering
  - **Advanced Take-Up System:** Additional tension bar to roll up finished DTF films better
  - **Advanced Film Detector** - automatically turns on and off powder and heating elements
  - **Media Guide** - keeps powder from falling
  - **Low Power Requirement** - 110V
- **Specifications:**
  - **Dimensions:** 59" L x 33" W x 33" H
  - **Shipping Weight:** 369.27 lbs. (167.5 kg)



## PRODUCT VALUE PROPOSITION

# SEISMO A24



- **Spreads and melts powder, saving time, effort, and cost**
- **Features:**
  - **Up to 24" wide media**
  - **Built-in Air Filters** - HEPA 2-layer air filters filter out any fumes from DTF powdering
  - **Advanced Take-Up System:** Additional tension bar to roll up finished DTF films better
  - **Advanced Film Detector** - automatically turns on and off powder and heating elements
  - **Air Vacuum Conveyor System** - keep film from slipping or moving
- **Specifications:**
  - **Dimensions:** 74" L x 48" W x 40" H
  - **Shipping Weight:** 783 lbs. (355.16 kg)



PRODUCT VALUE PROPOSITION

# SEISMO L16



- Spreads and melts powder, saving time, effort, and cost
- Features:
  - Up to 16" wide media
  - Fully automated system
  - Variety of adjustable settings:
    - Belt Speed
    - Powder Shaking Power
    - Cooling
    - Suction
  - Head Strike Sensor - pulls film as printer prints
- Specifications:
  - Dimensions: 63"L x 30"W x 39"H
  - Shipping Weight: 440 lbs. (200 kg)

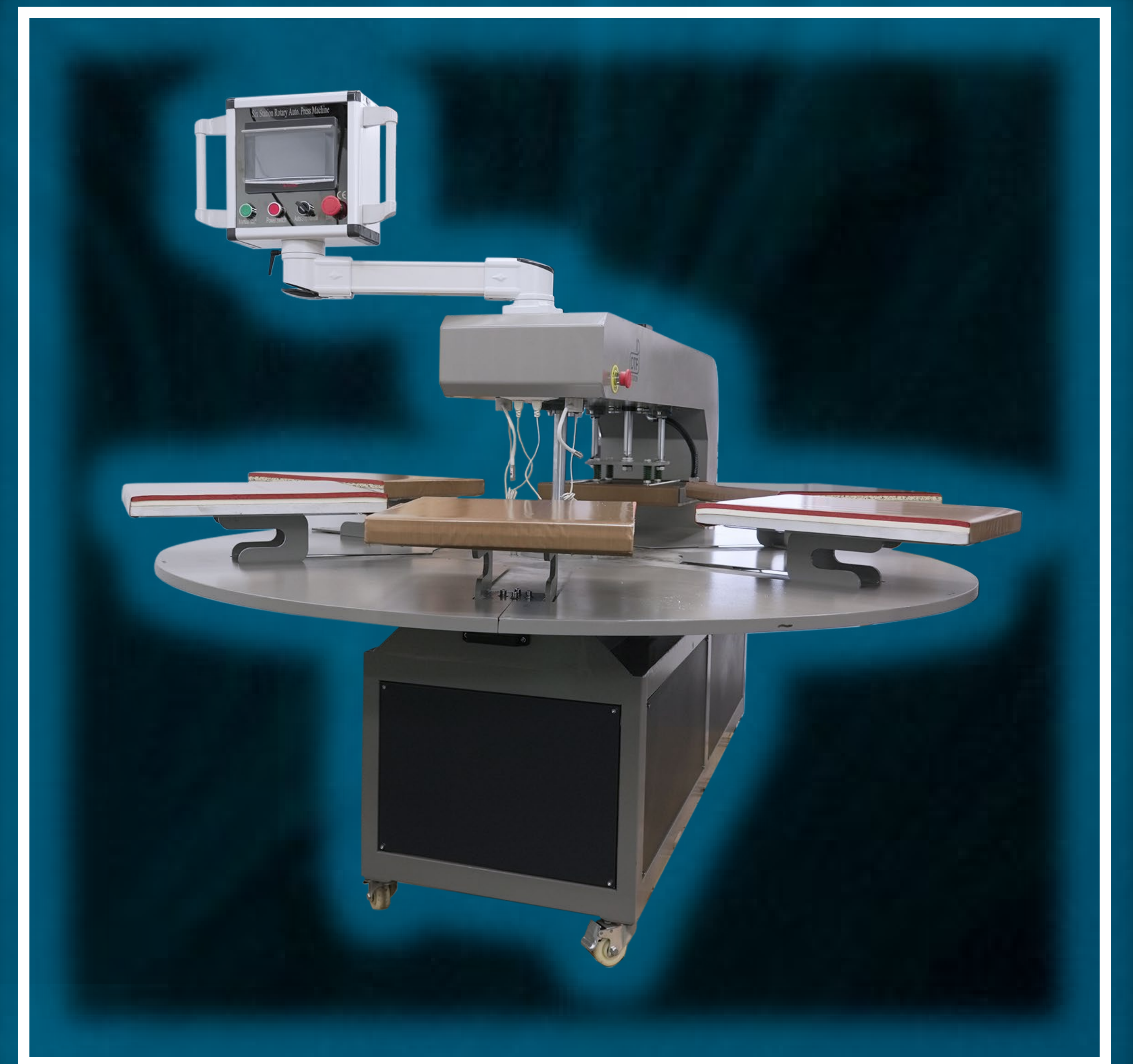


PRODUCT VALUE PROPOSITION

# MAXIMA 360



- **6 platens - automate the pressing process**
- **Features:**
  - **Digital temperature indicator**
  - **Consistent temperature and even pressure**
  - **Heat-resistant material remains stable up to 750°F**
  - **Laser Alignment System**
  - **Safety Sensor**
- **Specifications:**
  - **Dimensions: 81.75”L x 56.75”W x 58.5”H**
  - **Shipping Weight: 1213 lbs. (550 kg)**







**WELCOME  
TO DTF  
STATION**





**DTFSTATION.COM**  
**SALES@DTFSTATION.COM**